



1700 mm [5'-7"] WORLD FRYER HOOD
FOR BURGER KING CORPORATION

FRYER HOOD MODEL: ELX-ND-BD-38-(BK-WFH-5-7)

Manufactured by:
GAYLORD INDUSTRIES

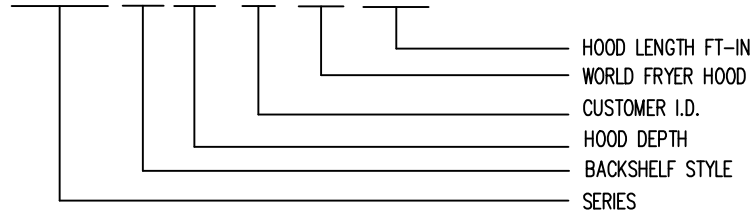
10900 SW. AVERY ST.
TUALATIN, OREGON 97062
UNITED STATES OF AMERICA
PHONE: (503) 691-2010
EMAIL: INFO@GAYLORDUSA.COM

Drwg no.: C-12645

Sheet: 1
Rev. :07

MODEL NUMBER DESCRIPTION

FRYER HOOD MODEL NUMBER DESCRIPTION ELX-ND-BD-38-(BK-WFH-5-7)



DRAWING INDEX

Sheet #	Description
01	COVER SHEET
02	INDEX AND MODEL NUMBER DESCRIPTION
03	GAYLORD CONTACTS
04	LISTING, TESTING AND APPROVALS
05	SPECIFICATIONS
06	FRYER HOOD OVERVIEW
07	FRYER HOOD ELEVATION VIEW
08	FRYER HOOD SECTION VIEW
09	FRYER HOOD RIGHT END VIEW / FIRE SYSTEM BRACKET
10	FRYER HOOD END VIEW AT FRY DUMP
11.0	FRYER HOOD PLAN VIEW
11.1	OPTIONAL FRYER HOOD PLAN & SECTION VIEW
12	FRYER HOOD OPTIONAL UTILITIES ELEVATION VIEW
13	FRYER HOOD OPTIONAL UTILITIES PLAN VIEW
14	FRYER HOOD FIRE SYSTEM PIPING PLAN VIEW
15	FRYER HOOD FIRE SYSTEM PIPING DETAILS
16	FRYER HOOD ENCLOSURE PANELING DETAILS
17	FRYER HOOD HANGING DETAILS
18	FIRE SYSTEM EXTERNAL PIPING DETAILS
19	TYPICAL GAS APPLIANCE CONNECTION DETAILS
20	HOOD DUCT EXTENSION DETAILS
21	OPTIONAL WALL FLASHING DETAILS
22	PROCEDURE TO CONFIRM HOOD EXHAUST VOLUME
23	TYPICAL ROC HOODS CONTROL MATRIX

07	JA	8/10/15	NO CHANGE		MODEL #			ITEM #	WORK ORDER	<div><div>GAYLORD</div><div>10900 SW. AVERY ST. TUALATIN OR 97062-1149 (503) 691-2010</div></div>	WORLD FRYER HOOD				DATE:	12/3/09
06	JA	7/30/15	NO CHANGE								SCALE:	NTS				
05	EP	7/25/11	REVISED TO ELX-ND-BD-38		ELX-ND-BD-38-(BK-WFH-5-7)						DWG. NO.:	C-12645				
04	SN	7/26/10	ADDED SHEET								FILE NO.:					
REV	DWN.BY	DATE	DESCRIPTION	APP'D	DRAWN BY:	SN	DESIGN BY:	CHECKED BY:	ELECT. CHECK:	APPR'D. BY:	F.P. CHECK:	SHEET NO.:	2	REV. NO.:	07	

Gaylord Contact Information

Overview

The Gaylord package includes the following:

1. Fryer Hood
2. Fryer Hood Enclosure Panels (Optional)
3. Fryer Hood Wall Flashing (Optional)


Direct Gaylord Technical Support

Gaylord Industries, Tualatin, Oregon USA:

1. John Anderson

Direct phone: 971-223-1238

E-Mail: johna@gaylordusa.com

07	JA	8/10/15	NO CHANGE		MODEL #	ITEM #	WORK ORDER	 10900 SW. AVERY ST. TUALATIN OR 97062-1149 (503) 691-2010	WORLD FRYER HOOD 1700 mm [5' 7"] BURGER KING CORPORATION	DATE: 12/3/09
06	JA	7/30/15	NO CHANGE							SCALE: NTS
05	EP	7/25/11	REVISED TO ELX-ND-BD-38		ELX-ND-BD-38-(BK-WFH-5-7)					DWG. NO.: C-12645
04	SN	7/26/10	NO CHANGE							FILE NO.:
REV/DWN.BY	DATE		DESCRIPTION	APP'D	DRAWN BY: SN	DESIGN BY:	CHECKED BY:	ELECT. CHECK:	APPR'D. BY:	F.P. CHECK:
										SHEET NO.: 3 REV. NO.: 07

U.S. HOOD LISTING AND APPROVAL REFERENCE

BROILER HOOD

INTERTEK TESTING SERVICES, INC.

BROILER HOOD IS E.T.L. LISTED EXHAUST HOODS WITHOUT
EXHAUST DAMPERS, REPORT NO. 3130583CRT-008.
TESTED UNDER U.L.STANDARD 710.



FRYER HOOD

UNDERWRITERS LABORATORIES, INC.

U.L. LISTED UNDER THE CATEGORY EXHAUST HOODS WITHOUT
EXHAUST DAMPERS, FILE NO. MH13522. TESTED UNDER U.L.
STANDARD U.L. 710.



NATIONAL FIRE PROTECTION ASSOCIATION

MEETS ALL REQUIREMENTS OF NFPA-96

"STANDARD FOR VENTILATION CONTROL & FIRE PROTECTION OF
COMMERCIAL COOKING OPERATIONS"

NSF-NATIONAL SANITATION FOUNDATION

MEETS ALL REQUIREMENTS OF NSF STANDARD NO.2

'FOOD SERVICE EQUIPMENT'



MECHANICAL CODES

MEETS ALL REQUIREMENTS OF THE UMC, BOCA, SBCCI AND IMC.

VDI

CERTIFIED TESTING OF XG EXTRACTORS TO VDI STANDARD 2052

06	JA	7/30/15	NO CHANGE		MODEL #	ITEM #	WORK ORDER	 10900 SW. AVERY ST. TUALATIN OR 97062-1149 (503) 691-2010	WORLD FRYER HOOD 1700 mm [5' 7"] BURGER KING CORPORATION	DATE:	12/3/09
06	JA	7/30/15	NO CHANGE							SCALE:	NTS
05	EP	7/25/11	REVISED TO ELX-ND-BD-38		ELX-ND-BD-38-(BK-WFH-5-7)					DWG. NO.:	C-12645
04	SN	7/26/10	NO CHANGE							FILE NO.:	
REV/DWN.BY	DATE		DESCRIPTION	APP'D	DRAWN BY: SN	DESIGN BY:	CHECKED BY:	ELECT. CHECK:	APPR'D. BY:	F.P. CHECK	SHEET NO.: 4 REV. NO.: 07

World 1700 mm [5' 7"] Fryer Hood Specifications

Fryer Hood Specifications

Gaylord model ELX-ND-BD-38-(BK-WFH-5-7) low proximity, wall mounted hood 1700mm [5'-7"] long. The hood is designed to go over either a 3 Basket/2 Basket/3 Basket Fryer Configuration, or a four 2 basket fryer configuration. This hood is not designed for a 3 Basket/2 Basket/Fry Dispenser/3 Basket configuration. The hood utilizes patented high efficiency stainless steel Gaylord XGS Extractors. The hood design includes a built in 76mm [3"] air space at the back for allowing direct mounting to a limited combustible wall (sheet rock on metal studs) for compliance to NFPA-96. Also built into the back of the hood are utility raceways that may be used for gas piping and electrical services. All gas piping is provided and installed by the plumbing contractor, and all electrical conduit, junction boxes, wire and receptacles are provided and installed by the electrical contractor. The hood includes factory pre-piping for an Ansul R-102 fire extinguishing system or as an option may be pre-piped for an Amerex KP fire system. A mounting bracket, for either an Ansul R-102 or Amerex KP fire system, is provided to for mounting the fire system behind the hood enclosure panel. The hood is constructed of all 18 gauge, type 300 series stainless steel, number 4 finish.

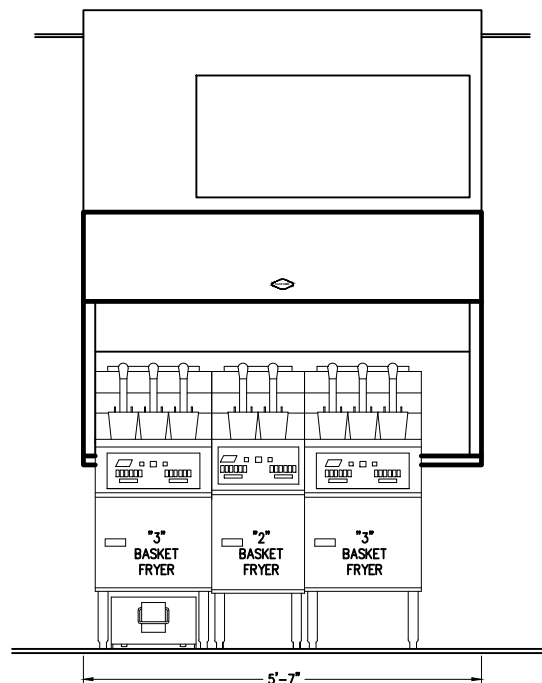
Optional Enclosure Panels Optional is a stainless steel enclosure kit to fill the space between the top of the hood and the finished ceiling. An access panel in the front panel is provided to gain access to the static port and fire system.

Optional Wall Flashing One set of wall flashing for fryer hood as shown on the drawings.

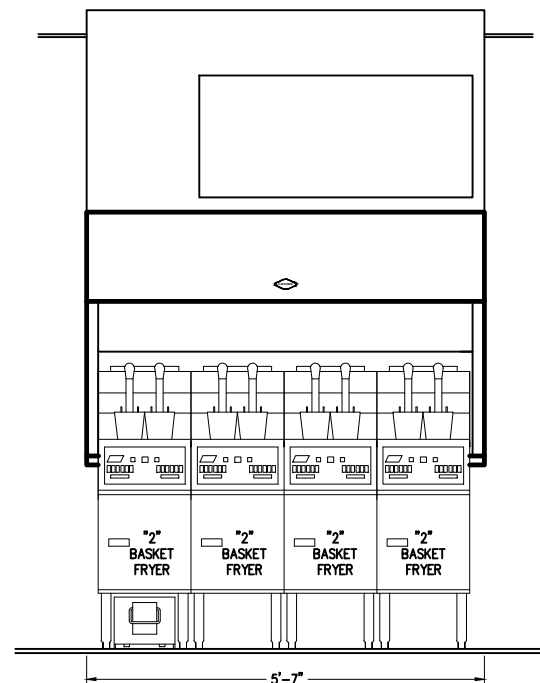
Hanging Weight: The hanging weight of the fryer hood is 160 kG [350 lbs].

	07	JA	8/10/15	NO CHANGE		MODEL #				ITEM #	WORK ORDER	<div><div>GAYLORD</div><div>10900 SW. AVERY ST. TUALATIN OR 97062-1149 (503) 691-2010</div></div>	WORLD FRYER HOOD 1700 mm [5' 7"] BURGER KING CORPORATION				DATE: 12/4/09
	06	JA	7/30/15	NO CHANGE									SCALE: N.T.S.				
	05	EP	7-25-11	REVISED TO ELX-ND-BD-38		ELX-ND-BD-38-(BK-WFH-5-7)							DWG. NO.: C-12645				
	04	SN	7/26/10	NO CHANGE									FILE NO.:				
REV	DWN.BY	DATE	DESCRIPTION		APP'D	DRAWN BY:	SN	DESIGN BY:	CHECKED BY:	ELECT. CHECK:	APPR'D. BY:	F.P. CHECK:	SHEET NO.: 5	REV. NO.: 07			

IMPORTANT NOTE: This drawing depicts two basic fryer configurations approved by Burger King Corporation.



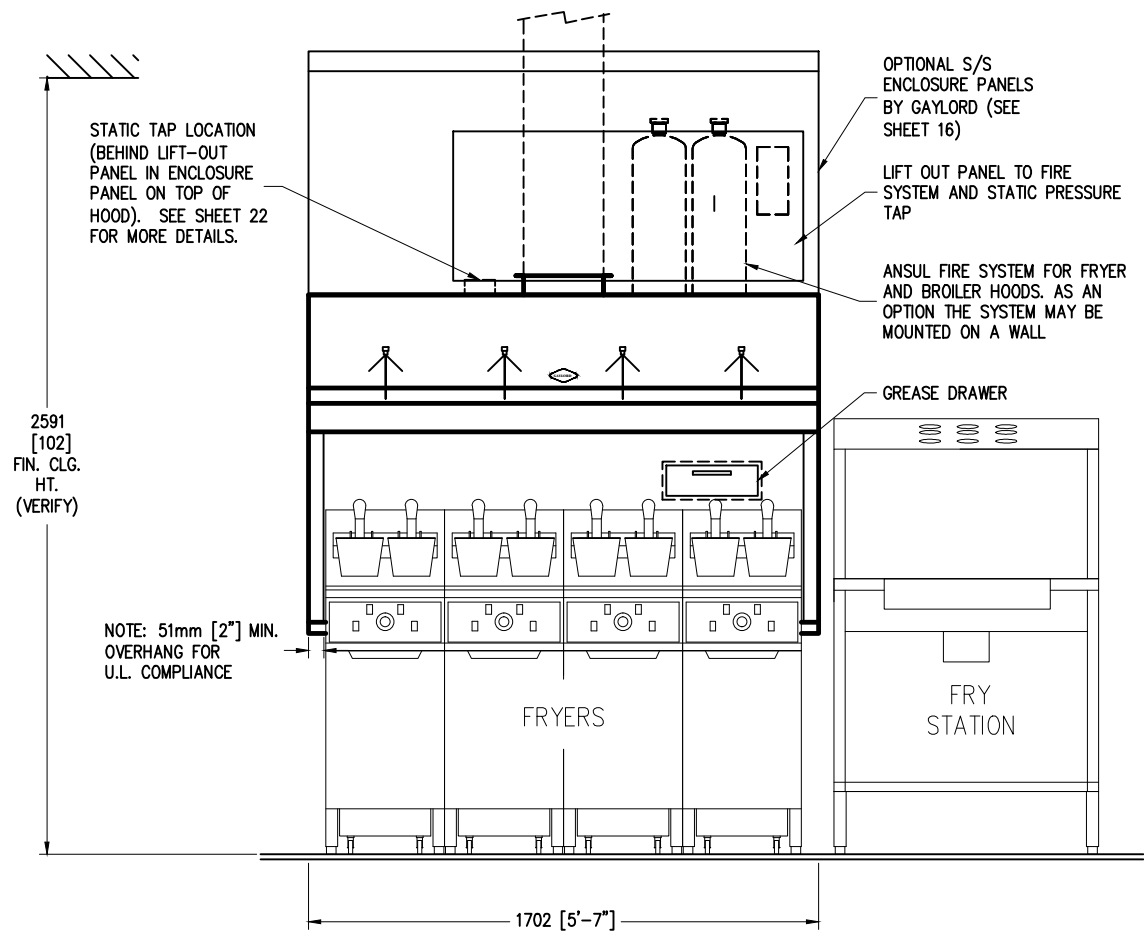
FRONT ELEVATION 1
1st BEST PRACTICE*



FRONT ELEVATION 2
2nd BEST PRACTICE*

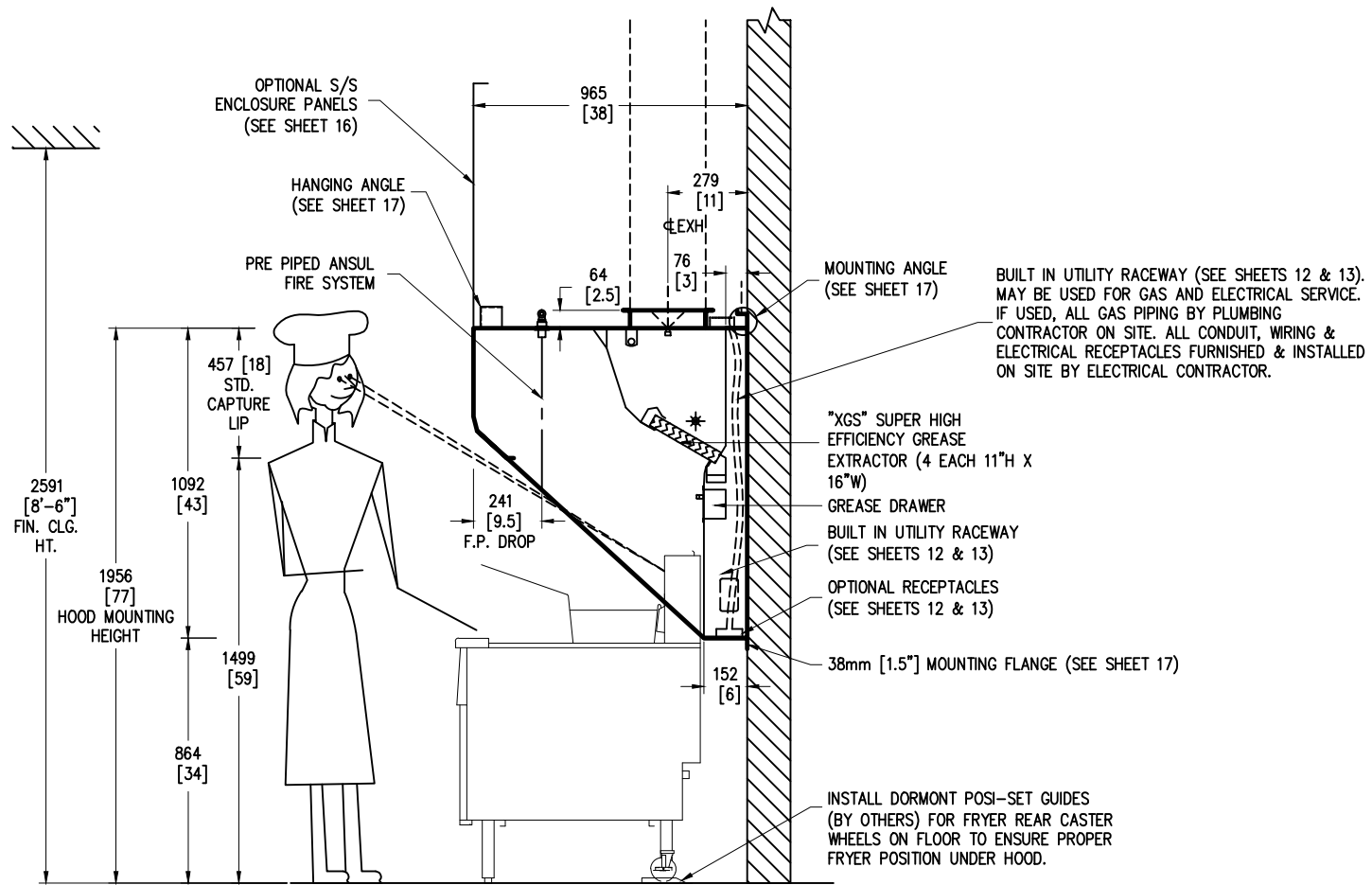
*AS RECOMENDED BY BURGER KING CORPORATION

07	JA	8/10/15	NO CHANGE		MODEL #			ITEM #	WORK ORDER	<div><div>GAYLORD</div><div>10900 SW. AVERY ST. TUALATIN OR 97062-1149 (503) 691-2010</div></div>	WORLD FRYER HOOD 1700 mm [5' 7"] BURGER KING CORPORATION			DATE:	12/4/09
06	JA	7/30/15	NO CHANGE		ELX-ND-BD-38-(BK-WFH-5-7)						SCALE:	N.T.S.			
05	EP	7/25/11	OMITTED DISPENSERS								DWG. NO.:	C-12645			
04	SN	7/26/10	NO CHANGE								FILE NO.:				
REV	DWN.BY	DATE	DESCRIPTION	APP'D	DRAWN BY:	SN	DESIGN BY:	CHECKED BY:	ELECT. CHECK:	APPR'D. BY:	F.P. CHECK:	SHEET NO.:	6	REV. NO.:	07



FRYER HOOD FRONT ELEVATION

07	JA	8/10/15	NO CHANGE		MODEL #			ITEM #	WORK ORDER	<div><div>GAYLORD</div><div>10900 SW. AVERY ST. TUALATIN OR 97062-1149 (503) 691-2010</div></div>	WORLD FRYER HOOD 1700 mm [5' 7"] BURGER KING CORPORATION			DATE:	12/4/09
06	JA	7/30/15	NO CHANGE								SCALE:	N.T.S.			
05	EP	7/25/11	REVISED TO ELX-ND-BD-38		ELX-ND-BD-38-(BK-WFH-5-7)						DWG. NO.:	C-12645			
04	SN	7/26/10	ADDED STATIC TAP NOTE								FILE NO.:				
REV	DWN.BY	DATE	DESCRIPTION	APP'D	DRAWN BY:	SN	DESIGN BY:	CHECKED BY:	ELECT. CHECK:	APPR'D. BY:	F.P. CHECK:	SHEET NO.:	7	REV. NO.:	07



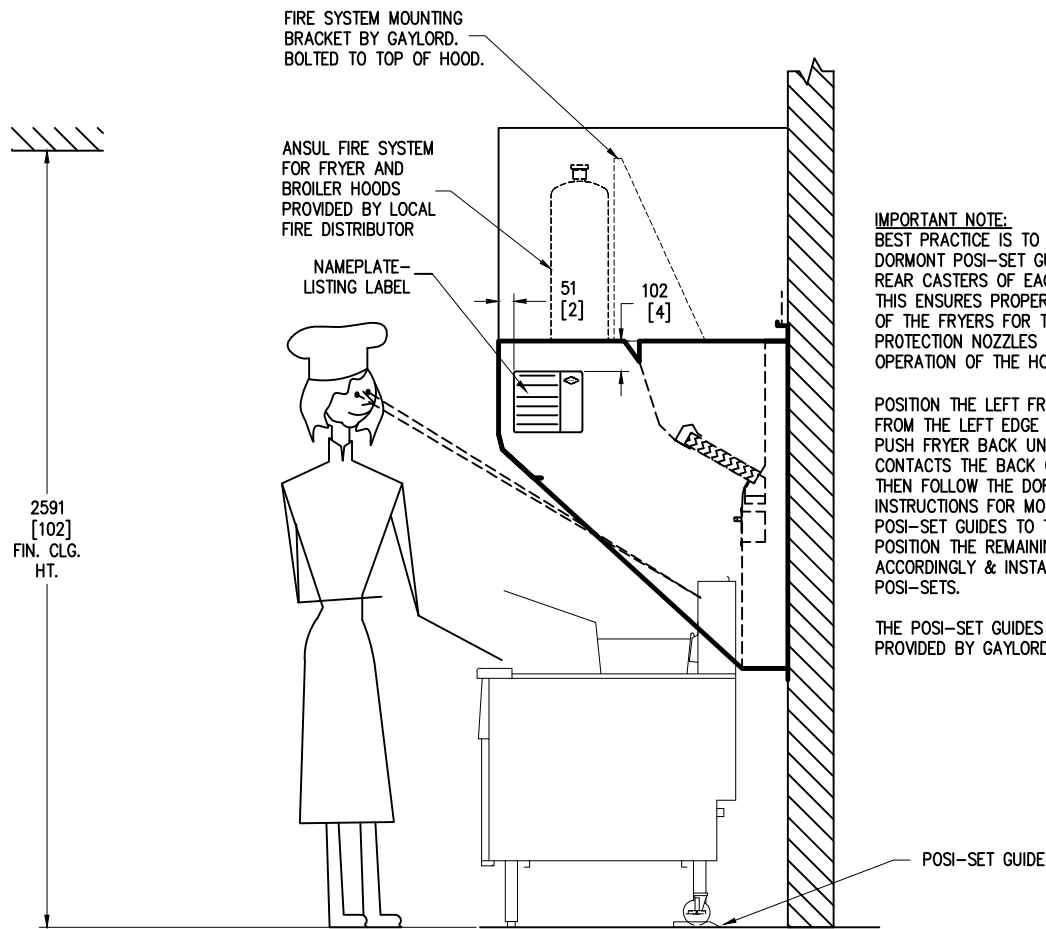
FRYER HOOD SECTION VIEW

07	JA	8/10/15	NO CHANGE		MODEL #	ITEM #	WORK ORDER
06	JA	7/30/15	NO CHANGE				
05	EP	7/25/11	REVISED TO ELX-ND-BD-38		ELX-ND-BD-38-(BK-WFH-5-7)		
04	SN	7/26/10	NO CHANGE				
REV	DWN.BY	DATE	DESCRIPTION	APP'D	DRAWN BY: SN	DESIGN BY:	CHECKED BY:
							ELECT. CHECK:
						APPR'D. BY:	F.P. CHECK:

GAYLORD
10900 SW. AVERY ST.
TUALATIN
OR 97062-1149
(503) 691-2010

WORLD FRYER HOOD
1700 mm [5' 7"]
BURGER KING CORPORATION

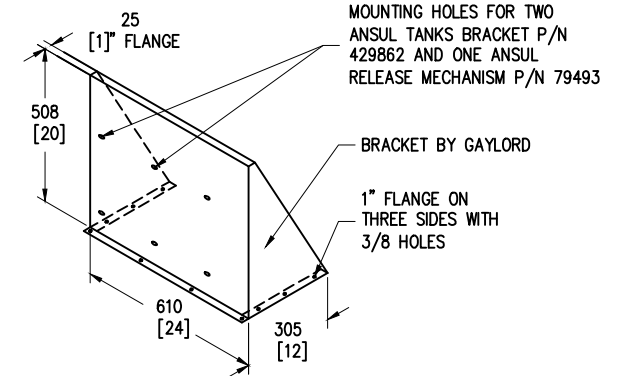
DATE: 12/4/09
SCALE: N.T.S.
DWG. NO.: C-12645
FILE NO.:
SHEET NO.: 8 REV. NO.: 07



IMPORTANT NOTE:
BEST PRACTICE IS TO INSTALL DORMONT POSI-SET GUIDES ON THE REAR CASTERS OF EACH FRYER. THIS ENSURES PROPER POSITIONING OF THE FRYERS FOR THE FIRE PROTECTION NOZZLES AND OPERATION OF THE HOOD.

POSITION THE LEFT FRYER 2" IN FROM THE LEFT EDGE OF HOOD. PUSH FRYER BACK UNTIL IT CONTACTS THE BACK OF THE HOOD. THEN FOLLOW THE DORMONT INSTRUCTIONS FOR MOUNTING THE POSI-SET GUIDES TO THE FLOOR. POSITION THE REMAINING FRYERS ACCORDINGLY & INSTALL THE POSI-SETS.

THE POSI-SET GUIDES ARE NOT PROVIDED BY GAYLORD.



FIRE SYSTEM BRACKET DETAIL

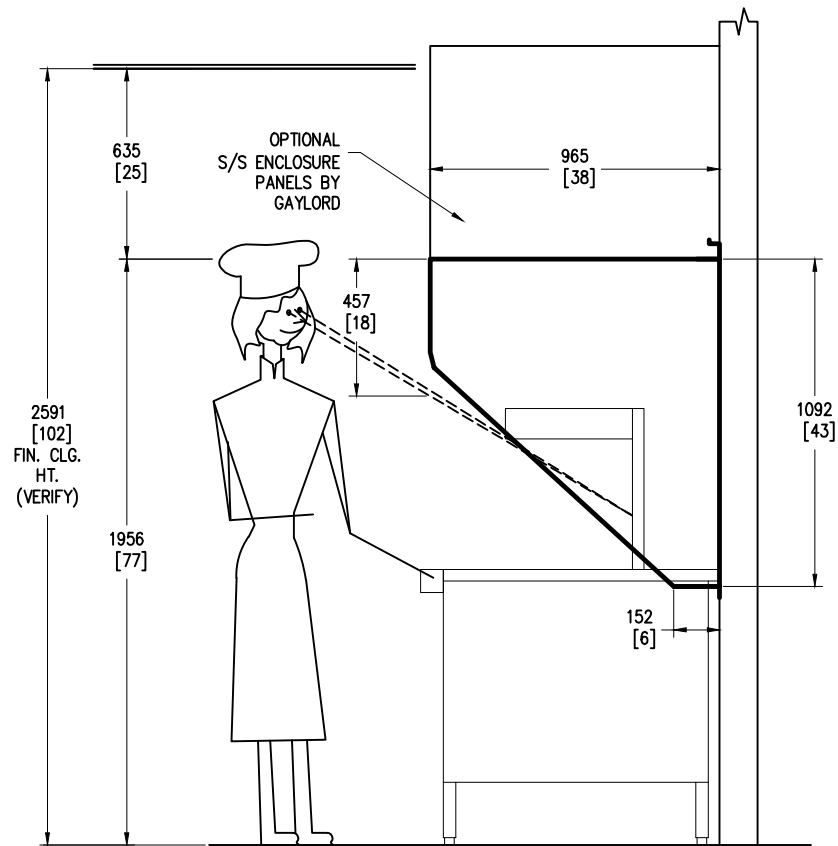
FRYER HOOD RIGHT END VIEW: HOOD LABELING & POSI-SET LOCATION

07	JA	8/10/15	NO CHANGE		MODEL #	ITEM #	WORK ORDER
06	JA	7/30/15	NO CHANGE				
05	EP	7/25/11	REVISED TO ELX-ND-BD-38		ELX-ND-BD-38-(BK-WFH-5-7)		
04	SN	7/26/10	NO CHANGE				
REV/DWN.BY	DATE	DESCRIPTION			APP'D	DRAWN BY: SN	DESIGN BY:
						CHECKED BY:	ELECT. CHECK:
						APPR'D. BY:	F.P. CHECK:

GAYLORD
10900 SW. AVERY ST.
TUALATIN
OR 97062-1149
(503) 691-2010

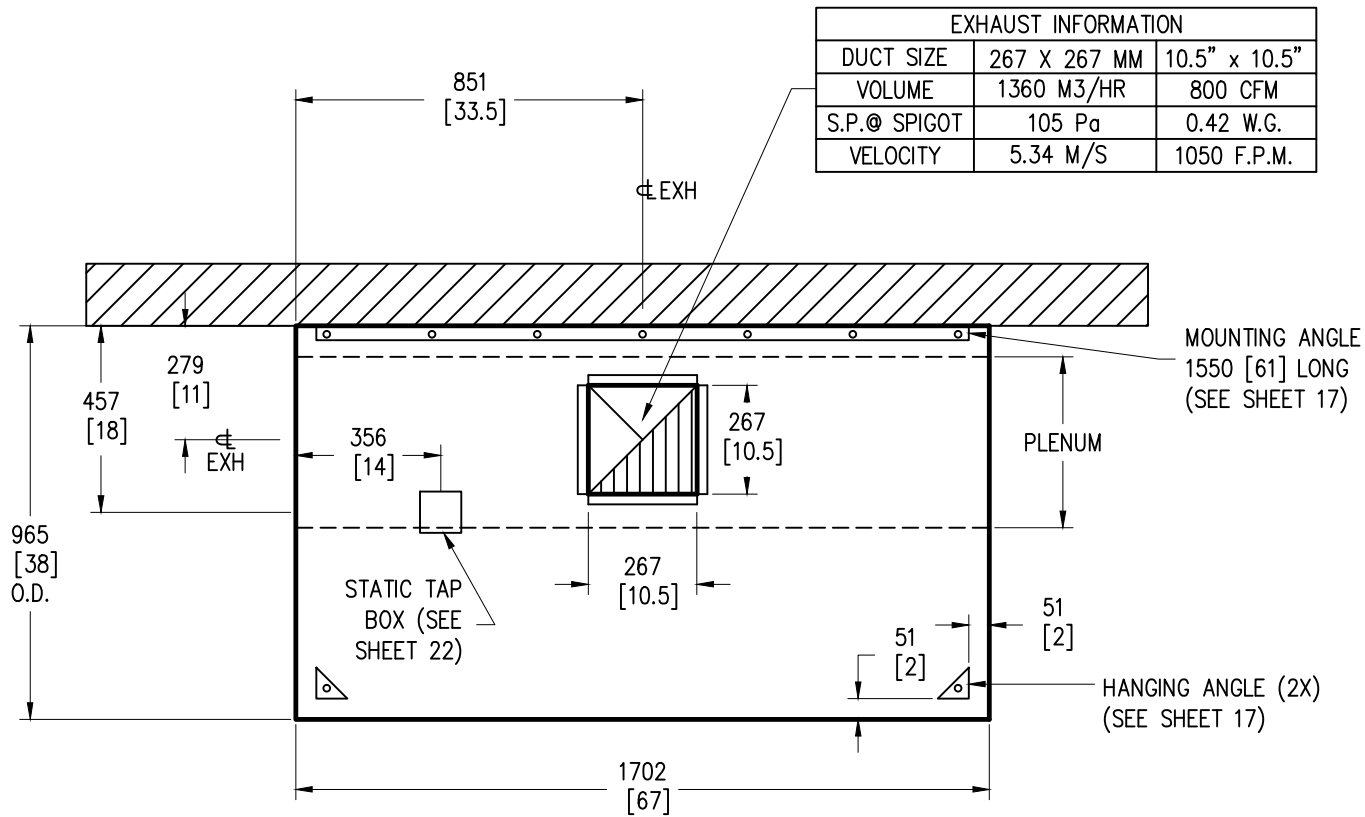
WORLD FRYER HOOD
1700 mm [5' 7"]
BURGER KING CORPORATION

DATE: 12/4/09
SCALE: N.T.S.
DWG. NO.: C-12645
FILE NO.:
SHEET NO.: 9 REV. NO.: 07



FRYER HOOD END VIEW AT FRY DUMP

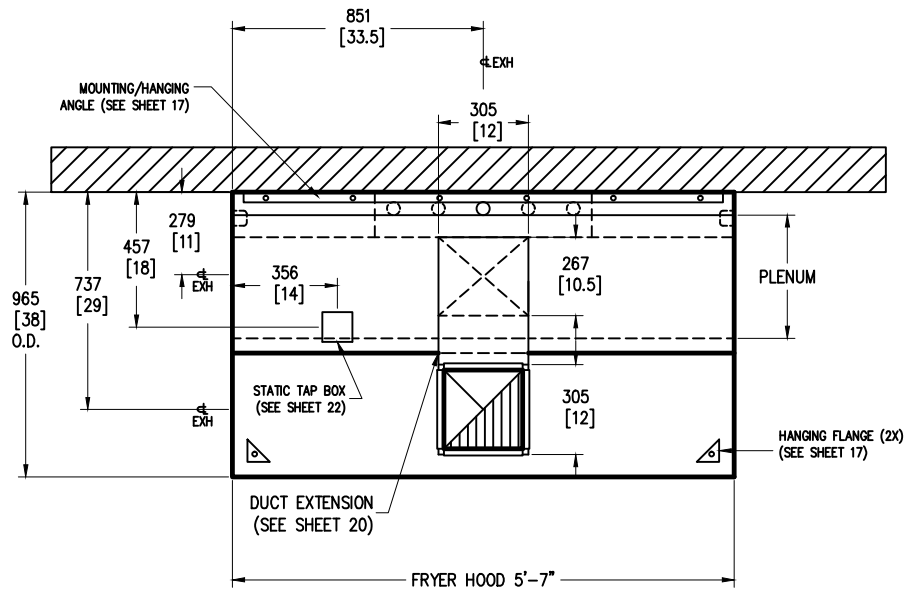
07	JA	8/10/15	NO CHANGE		MODEL #			ITEM #	WORK ORDER	<div><div>GAYLORD</div><div>10900 SW. AVERY ST. TUALATIN OR 97062-1149 (503) 691-2010</div></div>	WORLD FRYER HOOD 1700 mm [5' 7"] BURGER KING CORPORATION				DATE:	12/4/09
06	JA	7/30/15	NO CHANGE								SCALE:	N.T.S.				
05	EP	7/25/11	REVISED TO ELX-ND-BD-38		ELX-ND-BD-38-(BK-WFH-5-7)						DWG. NO.:	C-12645				
04	SN	7/26/10	NO CHANGE								FILE NO.:					
REV	DWN.	BY	DATE	DESCRIPTION	APP'D	DRAWN BY:	SN	DESIGN BY:	CHECKED BY:	ELECT. CHECK:	APPR'D. BY:	F.P. CHECK:	SHEET NO.:	10	REV. NO.:	07



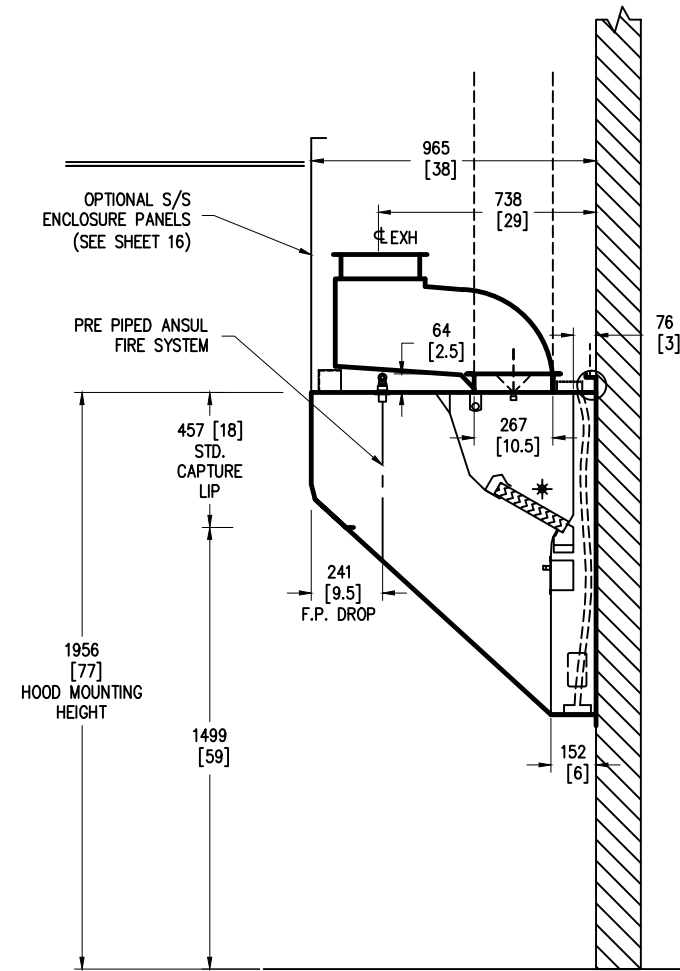
FRYER HOOD PLAN

07	JA	8/10/15	NO CHANGE		MODEL #			ITEM #	WORK ORDER	<div><div>GAYLORD</div><div>10900 SW. AVERY ST. TUALATIN OR 97062-1149 (503) 691-2010</div></div>	WORLD FRYER HOOD 1700 mm [5' 7"] BURGER KING CORPORATION				DATE:	03/10/10
06	JA	7/30/15	NO CHANGE								SCALE:	N.T.S.				
05	EP	7/25/11	REVISED TO ELX-ND-BD-38		ELX-ND-BD-38-(BK-WFH-5-7)						DWG. NO.:	C-12645				
04	SN	7/26/10	CHANGED S.P.								FILE NO.:					
REV	DWN.	BY	DATE	DESCRIPTION	APP'D	DRAWN BY:	JH	DESIGN BY:	CHECKED BY:	ELECT. CHECK:	APPR'D. BY:	F.P. CHECK:	SHEET NO.:	11	REV. NO.:	07

EXHAUST INFORMATION			
DUCT SIZE	267 X 267 MM	10.5" x 10.5"	
VOLUME	1360 M3/HR	800 CFM	
S.P. @ SPIGOT	258 Pa	1.034 W.G.	
VELOCITY	5.34 M/S	1050 F.P.M.	



FRYER HOOD PLAN
& SECTION VIEW WITH
OPTIONAL EXHAUST DUCT
OFFSET



FRYER HOOD SECTION VIEW

REV	DWN.	BY	DATE	DESCRIPTION	APP'D	DRAWN	BY:	SN	DESIGN	BY:	CHECKED	BY:	ELECT.	CHECK:	APP'D.	BY:	F.P.	CHECK
07		JA	8/10/15	REVISE S.P. WITH DUCT OFFSET														
06		JA	7/30/15	REVISE S.P. WITH DUCT OFFSET														
05		EP	7/25/11	REVISED TO ELX-ND-BD-38														
04		SN	7/26/10	CHANGED S.P.														

MODEL #	ITEM #	WORK ORDER
ELX-ND-BD-38-(BK-WFH-5-7)		

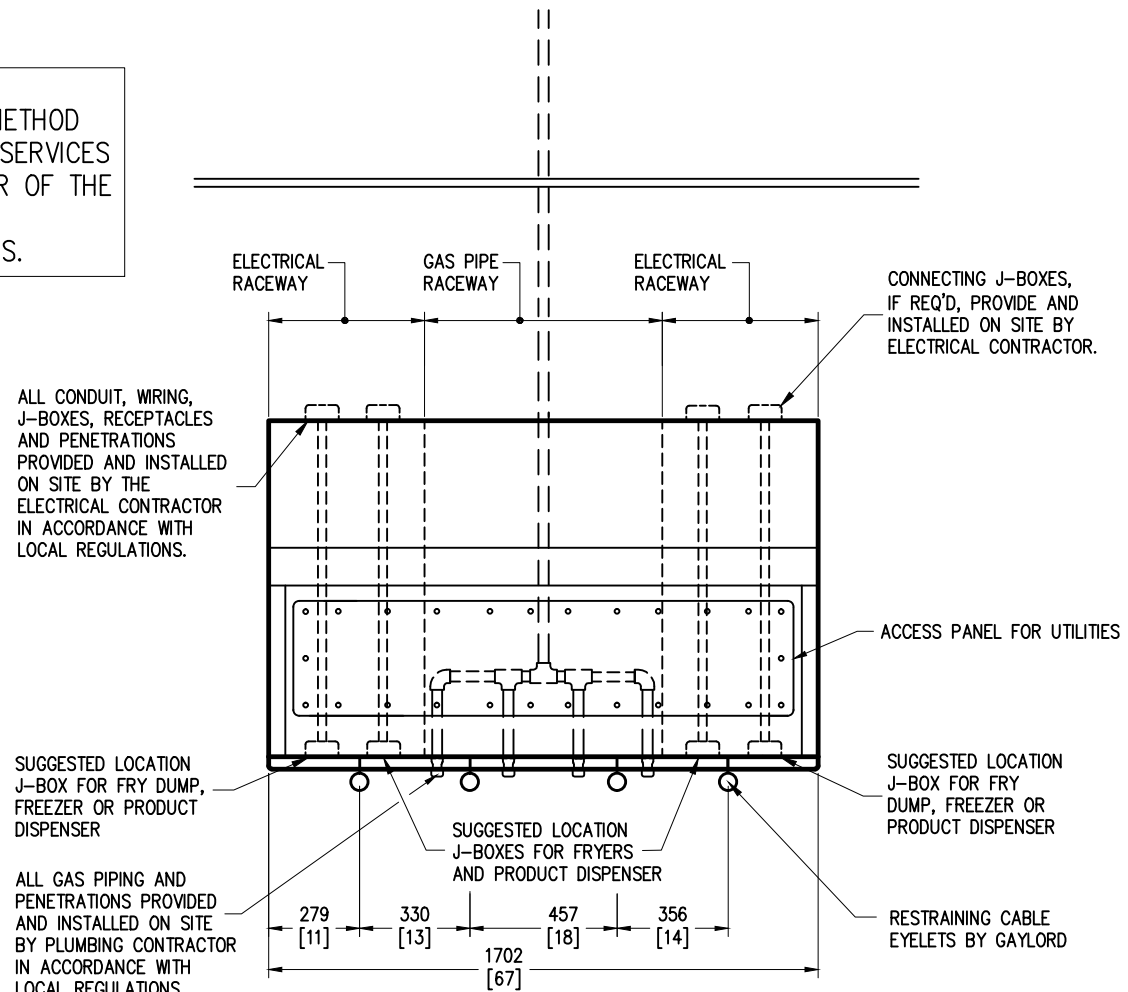
GAYLORD
10900 SW. AVERY ST.
TUALATIN
OR 97062-1149
(503) 691-2010

WORLD FRYER HOOD
1700 mm [5' 7"]
BURGER KING CORPORATION

DATE:	12/4/09
SCALE:	N.T.S.
DWG. NO.:	C-12645
FILE NO.:	
SHEET NO.:	11.1
REV. NO.:	07

IMPORTANT NOTE:

THIS DRAWING SHOWS THE OPTIONAL METHOD OF BRINGING IN GAS AND ELECTRICAL SERVICES THROUGH THE RACEWAYS AT THE REAR OF THE HOOD. ALL UTILITIES AND RACEWAY PENETRATIONS SHOWN HERE BY OTHERS.

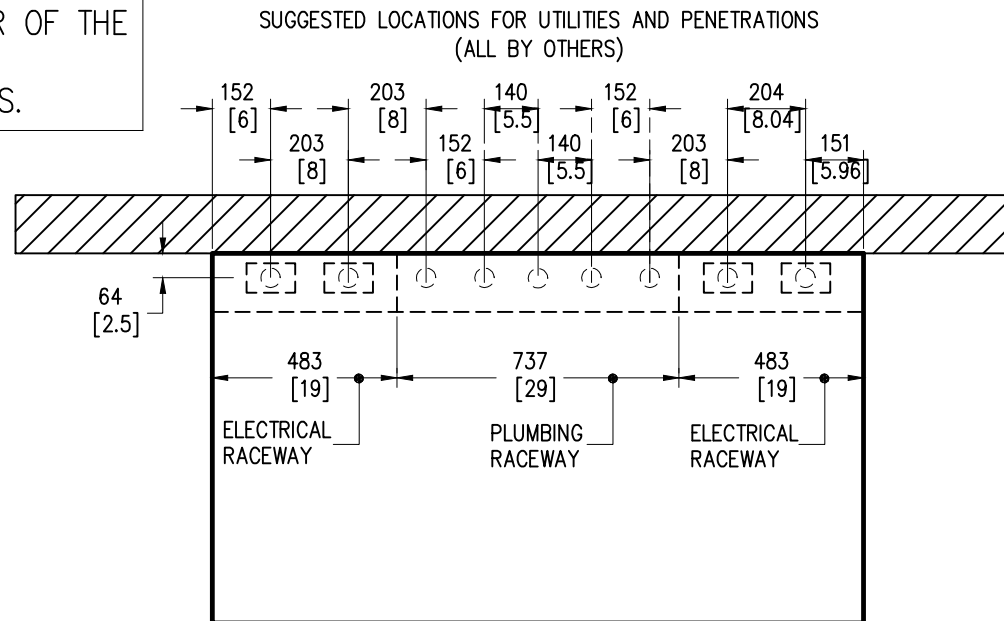


FRONT ELEVATION- UTILITIES

07	JA	8/10/15	NO CHANGE		MODEL #			ITEM #	WORK ORDER	<div><div>GAYLORD</div><div>10900 SW. AVERY ST. TUALATIN OR 97062-1149 (503) 691-2010</div></div>	WORLD FRYER HOOD 1700 mm [5' 7"] BURGER KING CORPORATION			DATE:	12/4/09	
06	JA	7/30/15	NO CHANGE								SCALE:	N.T.S.				
05	EP	7/25/11	REVISED TO ELX-ND-BD-38		ELX-ND-BD-38-(BK-WFH-5-7)						DWG. NO.:	C-12645				
04	SN	7/26/10	ADDED UTILITY ACCESS PANEL								FILE NO.:					
REV DWN.BY		DATE	DESCRIPTION	APP'D	DRAWN BY:	SN	DESIGN BY:	CHECKED BY:	ELECT. CHECK:	APPR'D. BY:	F.P. CHECK:	SHEET NO.:		12	REV. NO.:	07

IMPORTANT NOTE:


THIS DRAWING SHOWS THE OPTIONAL METHOD OF BRINGING IN GAS AND ELECTRICAL SERVICES THROUGH THE RACEWAYS AT THE REAR OF THE HOOD. ALL UTILITIES AND RACEWAY PENETRATIONS SHOWN HERE BY OTHERS.



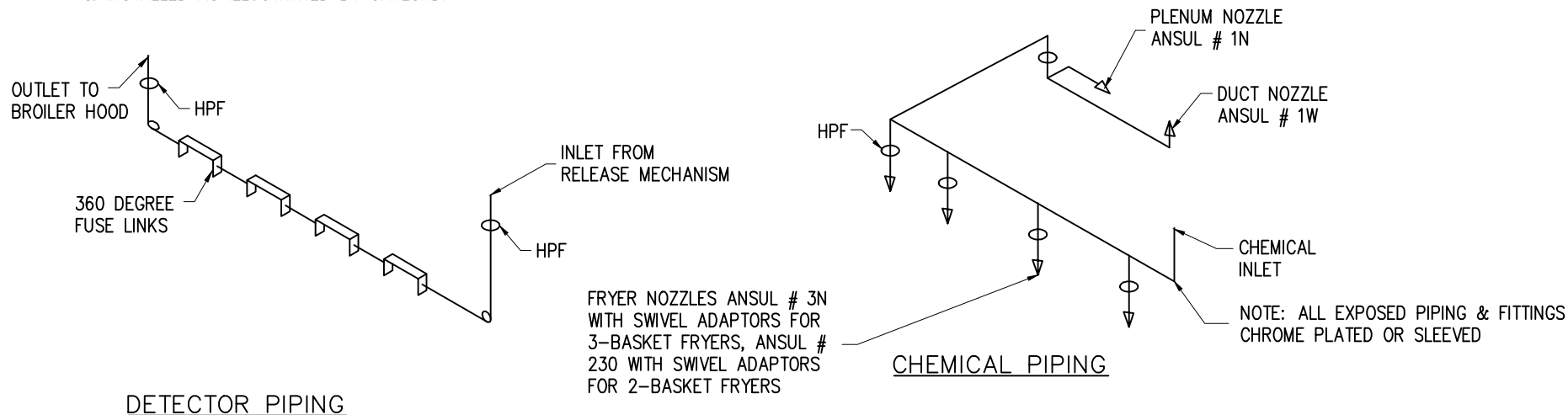
FRYER HOOD PLAN VIEW UTILITY OPENINGS

07	JA	8/10/15	NO CHANGE		MODEL #				ITEM #	WORK ORDER	<div><div>GAYLORD</div><div>10900 SW. AVERY ST. TUALATIN OR 97062-1149 (503) 691-2010</div></div>	<div><div>WORLD FRYER HOOD</div><div>1700 mm [5' 7"]</div><div>BURGER KING CORPORATION</div></div>				DATE:	12/4/09
06	JA	7/30/15	NO CHANGE									SCALE:	N.T.S.				
06	JA	7/30/15	NO CHANGE		ELX-ND-BD-38-(BK-WFH-5-7)							DWG. NO.:	C-12645				
05	EP	7/25/11	REVISED TO ELX-ND-BD-38									FILE NO.:					
REV	DWN.	BY	DATE	DESCRIPTION	APP'D	DRAWN BY:	SN	DESIGN BY:	CHECKED BY:	ELECT. CHECK:	APPR'D. BY:	F.P. CHECK:	SHEET NO.:	13	REV. NO.:	07	



07	JA	8/10/15	NO CHANGE			MODEL #			ITEM #	WORK ORDER	<div><p>10900 SW. AVERY ST. TUALATIN OR 97062-1149 (503) 691-1100</p></div> <div>WORLD FRYER HOOD 1700 mm [5' 7"] BURGER KING CORPORATION</div>	DATE:	12/4/09		
06	JA	7/30/15	NO CHANGE									SCALE:	N.T.S.		
05	EP	7/25/11	REVISED TO ELX-ND-BD-38			EKX-ND-BD-38-(BK-WFH-5-7)						DWG. NO.:	C-12645		
04	SN	7/26/10	NO CHANGE									FILE NO.:			
REV	DWN.BY	DATE	DESCRIPTION	APP'D	DRAWN BY	SN	DESIGN	CHECKED BY	ELECT. CHECKED BY	APP'D. BY		F.P. CHECK	SHEET NO.:	14	REV. NO.:

DETECTOR BRACKETS AND CONDUIT FURNISHED
& INSTALLED AS ILLUSTRATED BY GAYLORD.



DETECTOR PIPING

CHEMICAL PIPING

HPF=HOOD PENETRATION FITTING
(U.L. LISTED)

IMPORTANT NOTE:
ALL BLOW OFF CAPS TO BE
HIGH TEMPERATURE METAL

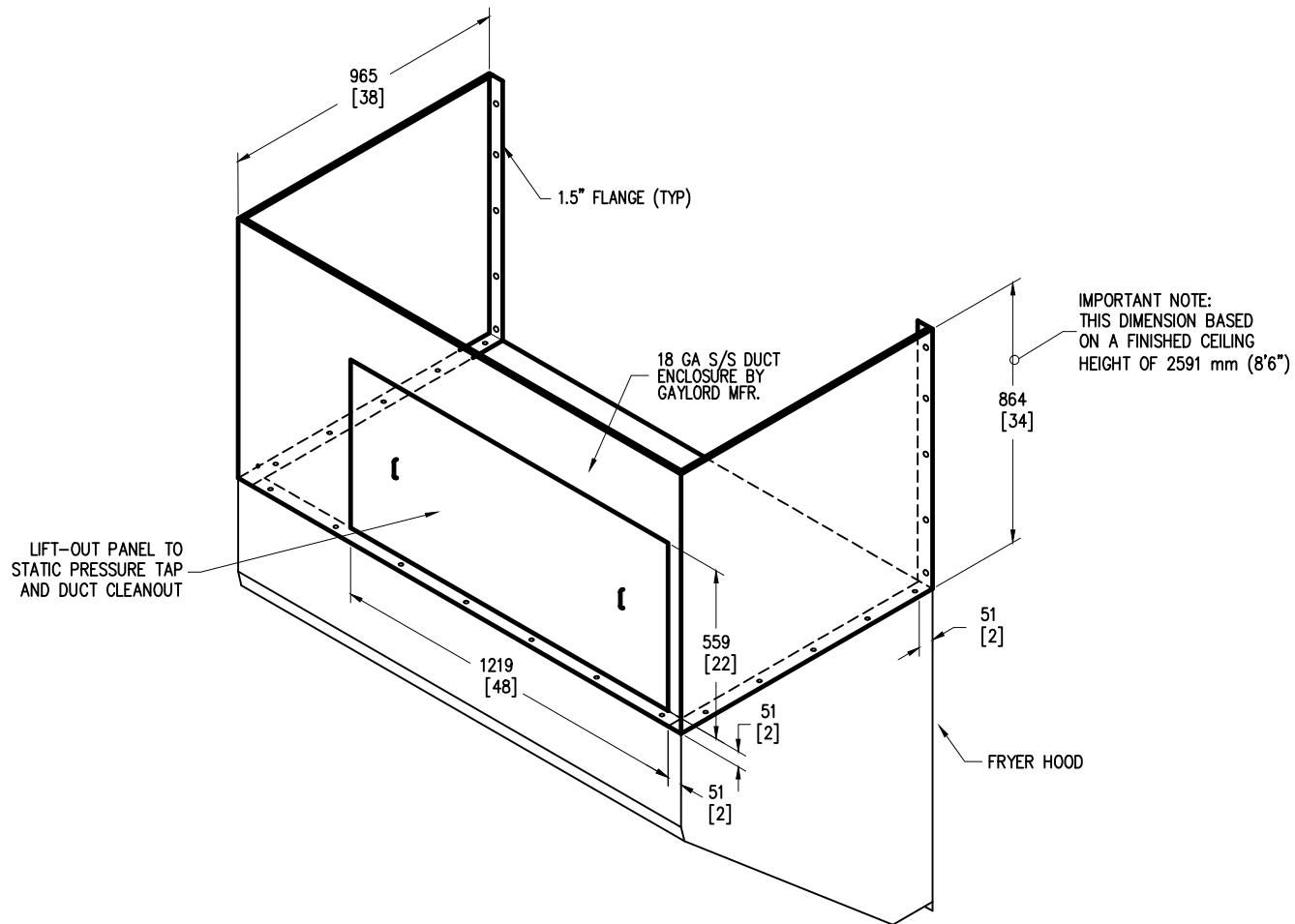
FIRE SYSTEM PIPING DETAILS FRYER HOOD

07	JA	8/10/15	NO CHANGE		MODEL #	ITEM #	WORK ORDER
06	JA	7/30/15	NO CHANGE				
05	EP	7/25/11	REVISED TO ELX-ND-BD-38		ELX-ND-BD-38-(BK-WFH-5-7)		
04	SN	7/26/10	CHANGED NOZZLE NOTE				
REV'D	BY	DATE	DESCRIPTION	APP'D	DRAWN BY: SN	DESIGN BY:	CHECKED BY:
							ELECT. CHECK:
						APPR'D. BY:	F.P. CHECK

GAYLORD
10900 SW. AVERY ST.
TUALATIN
OR 97062-1149
(503) 691-2010

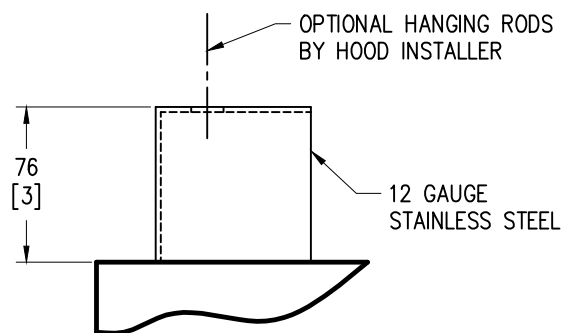
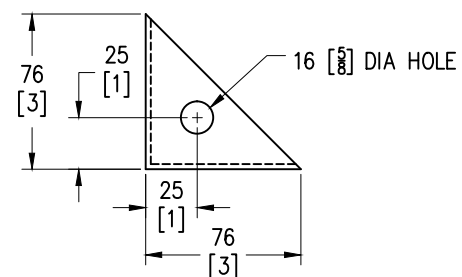
WORLD FRYER HOOD
1700 mm [5' 7"]
BURGER KING CORPORATION

DATE:	12/4/09
SCALE:	N.T.S.
DWG. NO.:	C-12645
FILE NO.:	
SHEET NO.:	15
REV. NO.:	07

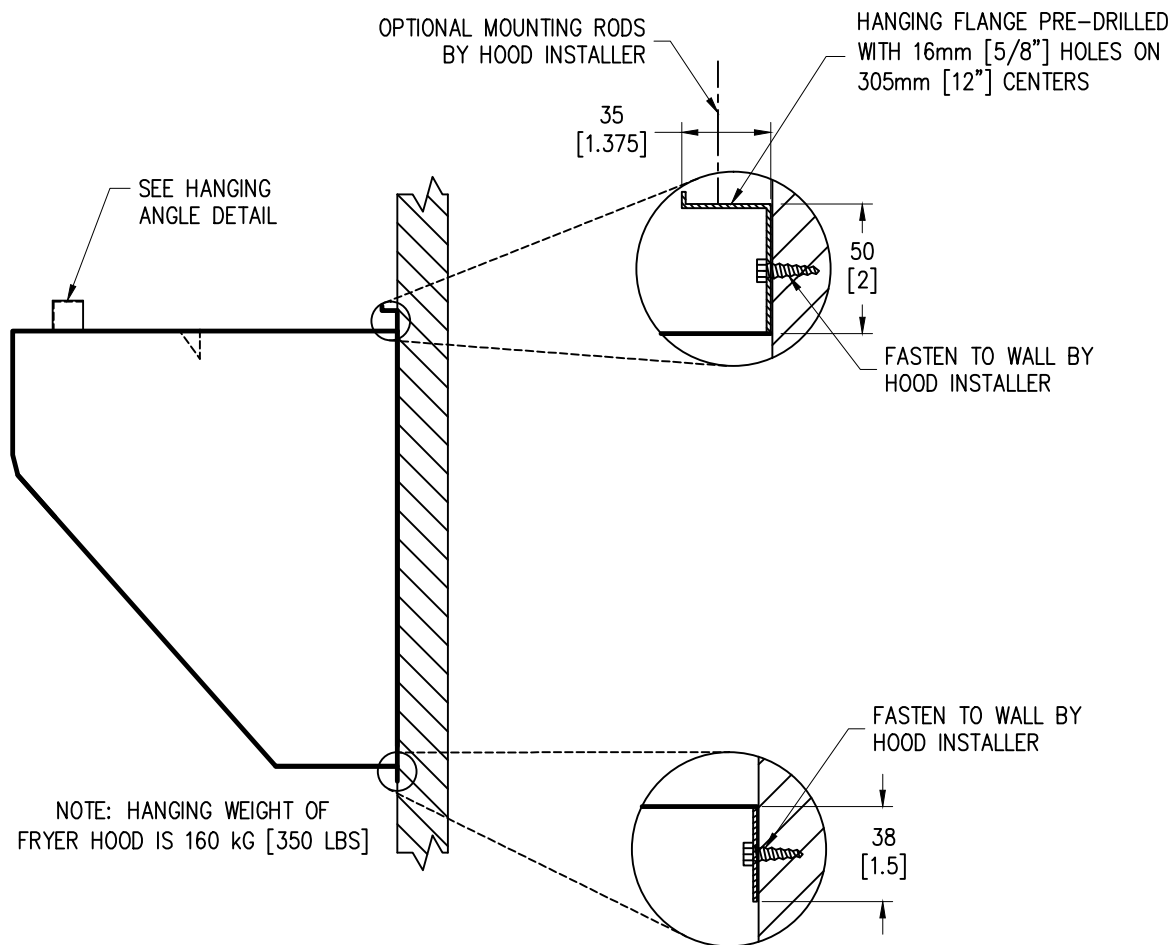


OPTIONAL FRYER HOOD ENCLOSURE PANELING DETAIL

07	JA	8/10/15	NO CHANGE		MODEL #				ITEM #	WORK ORDER	<div><div>GAYLORD</div><div>10900 SW. AVERY ST. TUALATIN OR 97062-1149 (503) 691-2010</div></div>	WORLD FRYER HOOD 1700 mm [5' 7"] BURGER KING CORPORATION				DATE:	12/5/09
06	JA	7/30/15	NO CHANGE									SCALE:	N.T.S.				
05	EP	7/25/11	REVISED TO ELX-ND-BD-38		ELX-ND-BD-38-(BK-WFH-5-7)							DWG. NO.:	C-12645				
04	SN	7/26/10	NO CHANGE									FILE NO.:					
REV	DWN.BY	DATE	DESCRIPTION	APP'D	DRAWN BY:	SN	DESIGN BY:	CHECKED BY:	ELECT. CHECK:	APPR'D. BY:	F.P. CHECK:	SHEET NO.:	16	REV. NO.:	07		



HANGING ANGLE DETAIL



HANGING DETAIL FOR FRYER HOOD

07	JA	8/10/15	NO CHANGE		MODEL #	ITEM #	WORK ORDER
06	JA	7/30/15	NO CHANGE				
05	EP	7/25/11	REVISED TO ELX-ND-BD-38		ELX-ND-BD-38-(BK-WFH-5-7)		
04	SN	7/26/10	NO CHANGE				
REV/DWN.BY	DATE	DESCRIPTION	APP'D	DRAWN BY: SN	DESIGN BY:	CHECKED BY:	ELECT. CHECK:

GAYLORD
10900 SW. AVERY ST.
TUALATIN
OR 97062-1149
(503) 691-2010

WORLD FRYER HOOD
1700 mm [5' 7"]
BURGER KING CORPORATION

DATE: 12/5/09
SCALE: N.T.S.
DWG. NO.: C-12645
FILE NO.:
SHEET NO.: 17 REV. NO.: 07

CONDUIT WITH
CABLE TO FIRE SYSTEM
CABINET BY FIRE SYSTEM
CONTRACTOR

32 [1.25"] MECHANICAL GAS VALVE
FURNISHED BY FIRE SYSTEM
CONTRACTOR, INSTALLED BY
PLUMBER

25 [1"] GAS PIPE
TO FRYER HOOD

25 [1"] GAS PIPE
TO BROILER HOOD

CEILING

FIRE SYSTEM DETAIL

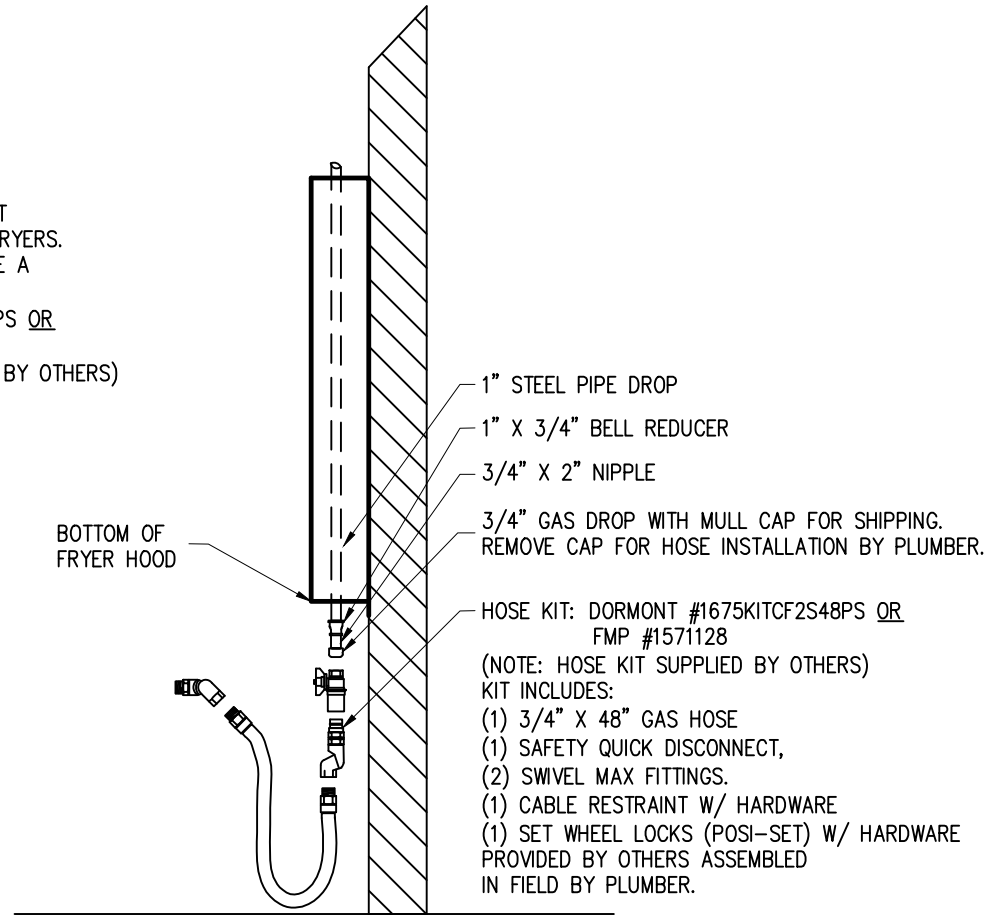
07	JA	8/10/15	NO CHANGE		MODEL #	ITEM #	WORK ORDER
06	JA	7/30/15	NO CHANGE				
05	EP	7/25/11	REVISE TO ELX-ND-BD-38		ELX-ND-BD-38-(BK-WFH-5-7)		
04	SN	7/26/10	NO CHANGE				
REV/DWN.BY	DATE	DESCRIPTION	APP'D	DRAWN BY: SN	DESIGN BY:	CHECKED BY:	ELECT. CHECK:
						APPR'D. BY:	F.P. CHECK

GAYLORD
10900 SW. AVERY ST.
TUALATIN
OR 97062-1149
(503) 691-2010

WORLD FRYER HOOD
1700 mm [5' 7"]
BURGER KING CORPORATION

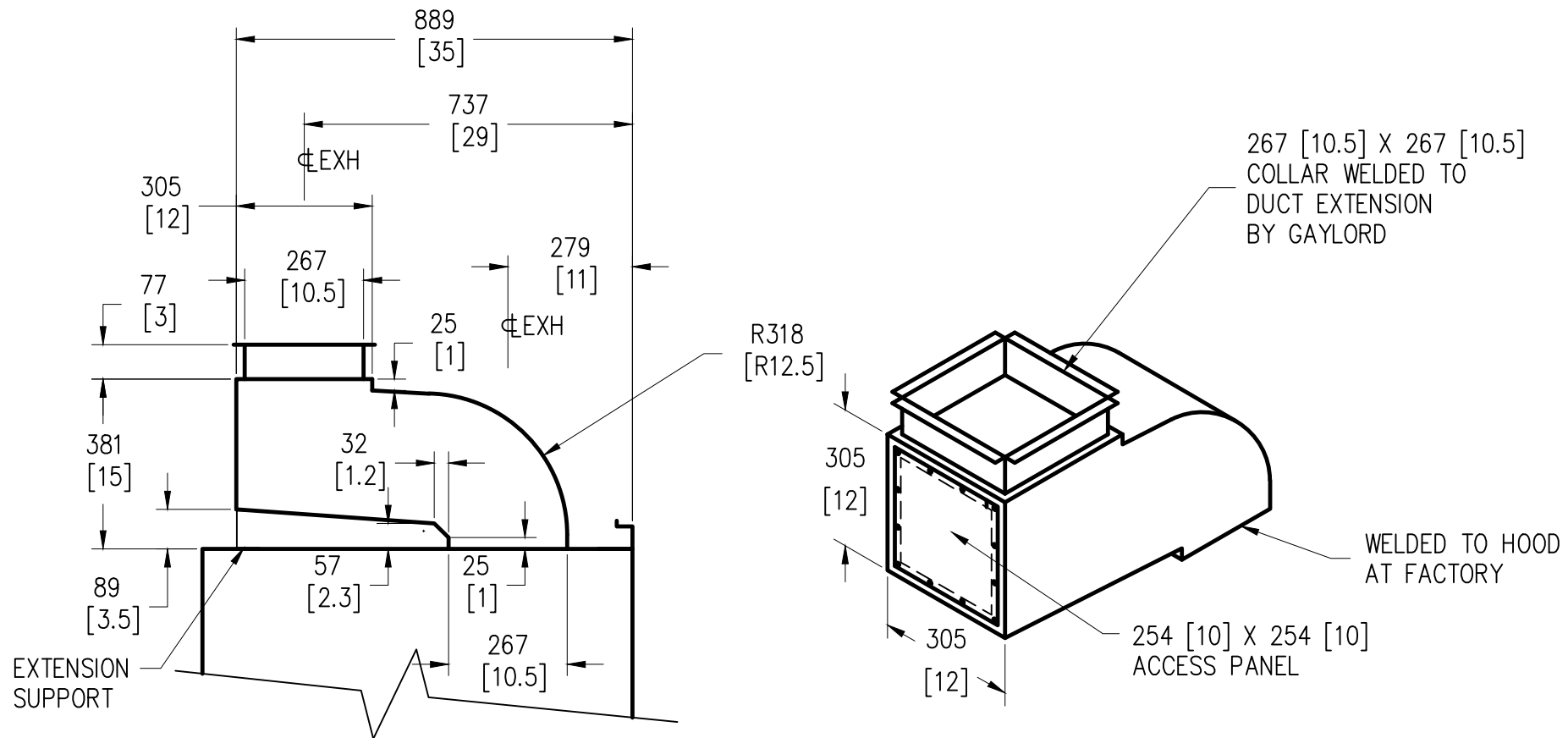
DATE: 12/5/09
SCALE: N.T.S.
DWG. NO.: C-12645
FILE NO.:
SHEET NO.: 18 REV. NO.: 07

IMPORTANT NOTE:
 THIS DRAWING DEPICTS BEST
 PRACTICE FOR INDIVIDUAL FRYERS.
 FOR A FRYER BATTERY, USE A
 SINGLE 1" HOSE KIT:
 DORMONT #16100KITCF2648PS OR
 FMP #1571129
 (NOTE: HOSE KIT SUPPLIED BY OTHERS)



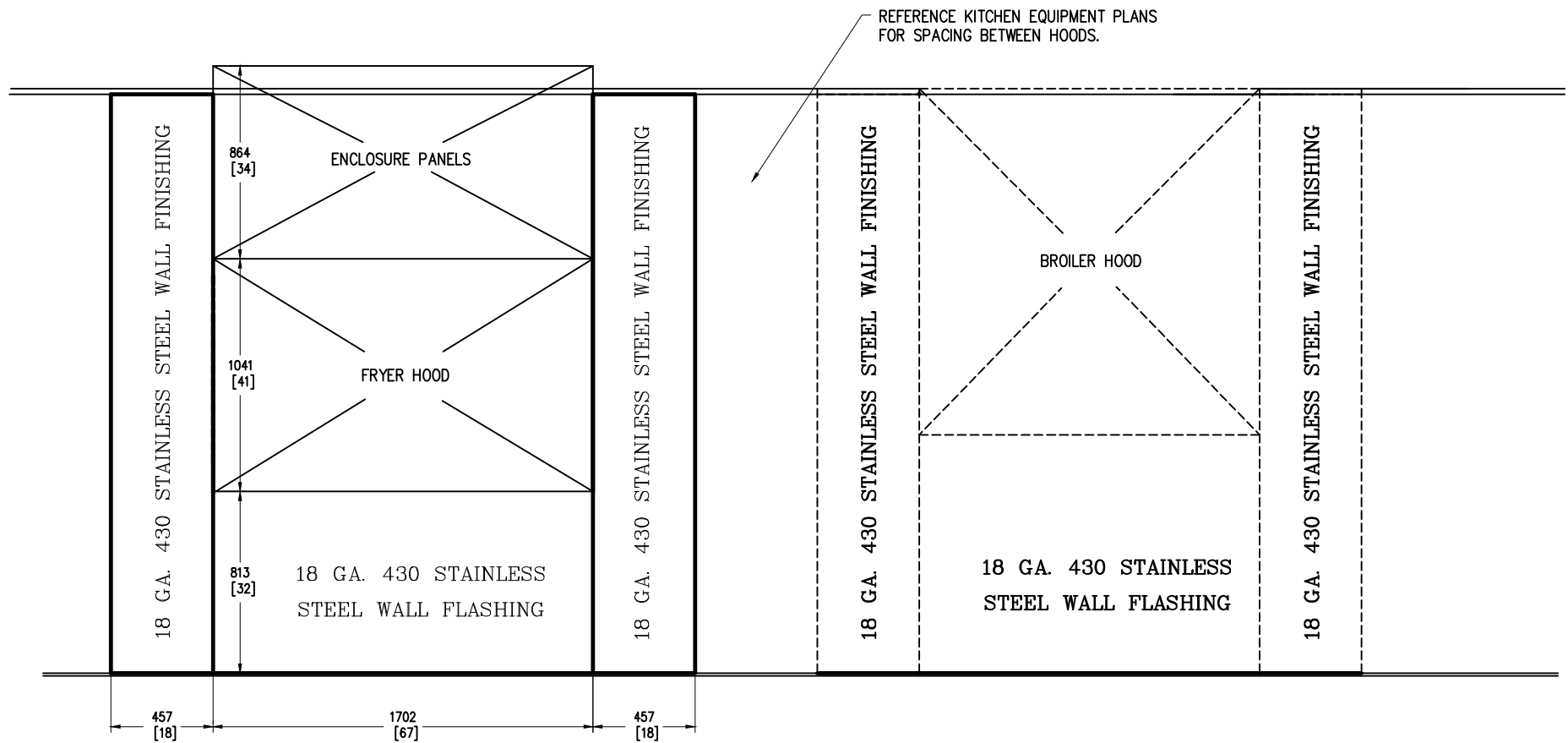
TYPICAL GAS APPLIANCE CONNECTION

07	JA	8/10/15	NO CHANGE		MODEL #				ITEM #	WORK ORDER	<div><div>GAYLORD</div><div>10900 SW. AVERY ST. TUALATIN OR 97062-1149 (503) 691-2010</div></div>	WORLD FRYER HOOD 1700 mm [5' 7"] BURGER KING CORPORATION				DATE: 12/5/09
06	JA	7/30/15	NO CHANGE									SCALE: N.T.S.				
05	EP	7/25/11	REVISED TO ELX-ND-BD-38		ELX-ND-BD-38-(BK-WFH-5-7)							DWG. NO.: C-12645				
04	SN	7/26/10	NO CHANGE									FILE NO.:				
REV	DWN.	BY	DATE	DESCRIPTION	APP'D	DRAWN BY	SN	DESIGN BY	CHECKED BY	ELECT. CHECK	APPR'D. BY	F.P. CHECK	SHEET NO.: 19	REV. NO.: 07		



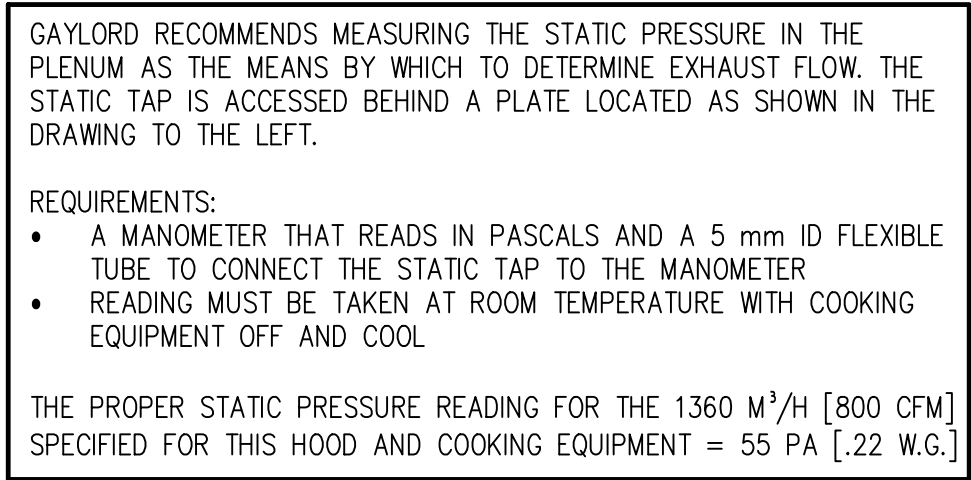
FRYER HOOD EXHAUST DUCT OFFSET
(18 GA. STAINLESS STEEL)

07	JA	8/10/15	NO CHANGE		MODEL #				ITEM #	WORK ORDER	<div>GAYLORD</div> <div>10900 SW. AVERY ST. TUALATIN OR 97062-1149 (503) 691-2010</div>	WORLD FRYER HOOD 1700 mm [5' 7"] BURGER KING CORPORATION		DATE:	12/5/09	
06	JA	7/30/15	NO CHANGE									SCALE:	N.T.S.			
05	EP	7/25/11	REVISED TO ELX-ND-BD-38		ELX-ND-BD-38-(BK-WFH-5-7)							DWG. NO.:	C-12645			
04	SN	7/26/10	NO CHANGE									FILE NO.:				
REV	DWN.	BY	DATE	DESCRIPTION	APP'D	DRAWN BY:	SN	DESIGN BY:	CHECKED BY:	ELECT. CHECK BY:	APPR'D. BY:	F.P. CHECK	SHEET NO.:	20	REV. NO.:	07



OPTIONAL WALL FLASHING DETAIL
PROVIDED BY GAYLORD

07	JA	8/10/15	NO CHANGE		MODEL #	ITEM #	WORK ORDER	GAYLORD 10900 SW. AVERY ST. TUALATIN OR 97062-1149 (503) 691-2010	WORLD FRYER HOOD 1700 mm [5' 7"] BURGER KING CORPORATION	DATE:	12/5/09
06	JA	7/30/15	NO CHANGE							SCALE:	N.T.S.
05	EP	7/25/11	REVISED TO ELX-ND-BD-38		ELX-ND-BD-38-(BK-WFH-5-7)					DWG. NO.:	C-12645
04	SN	7/26/10	NO CHANGE							FILE NO.:	
REV	DOWN	BY	DATE	DESCRIPTION	APP'D	DRAWN BY: SN	DESIGN BY:	CHECKED BY:	ELECT. CHECK:	APPR'D. BY:	F.P. CHECK:
SHEET	NO.	21	REV.	NO.	07						



07	JA	8/10/15	NO CHANGE		MODEL #				ITEM #	WORK ORDER	<div><div>GAYLORD</div><div>10900 SW. AVERY ST. TUALATIN OR 97062-1149 (503) 691-2010</div></div>	WORLD FRYER HOOD 1700 mm [5' 7"] BURGER KING CORPORATION				DATE:	7/26/10
06	JA	7/30/15	NO CHANGE									SCALE:	N.T.S.				
05	EP	7/25/11	REVISED TO ELX-ND-BD-38		ELX-ND-BD-38-(BK-WFH-5-7)							DWG. NO.:	C-12645				
04	SN	7/26/10	ADDED THIS SHEET									FILE NO.:					
REV'D	DNW.BY	DATE	DESCRIPTION	APP'D	DRAWN BY	SN	DESIGN	CHECKED BY	ELECT. CHECKED	APP'D BY		F.P. CHECK	SHEET NO.:	22	REV. NO.:	07	

BK ROC Hood / Ex Fan / Fire System / HVAC Control Matrix as of 5-12-09

Action	Reaction					Comments
	Ex Fan	Electric Pwr to Cooking Equip.	Mech. Gas Valve	HVAC Units	Make up air unit (if applicable)	
Fan sw. turned on	On	On	On	On	On	Note: HVAC Units must be on before ex fan can come on
Fan sw. turned off	Off	Off	On	On	Off	
Fire system discharges	On	Off	Off	Off	Off	
Slipping fan belt	On	Off	On	On	Off	Pwr to cooking equip. off via current sensor
Broken fan belt	On	Off	On	On	Off	Pwr to cooking equip. off via current sensor
Power outage	Off	Off	On	Off	Off	
HVAC system turned off	Off	Off	On	Off	Off	

07	JA	8/10/15	NO CHANGE		MODEL #	ITEM #	WORK ORDER
06	JA	7/30/15	NO CHANGE				
05	EP	7/25/11	REVISED TO ELX-ND-BD-38		ELX-ND-BD-38-(BK-WFH-5-7)		
04	SN	7/26/10	REVISED SHEET NUMBER				
REV/DWN.BY	DATE	DESCRIPTION	APP'D	DRAWN BY: SN	DESIGN BY:	CHECKED BY:	ELECT. CHECK:
						APPR'D. BY:	F.P. CHECK


 10900 SW. AVERY ST.
 TUALATIN
 OR 97062-1149
 (503) 691-2010

WORLD FRYER HOOD
 1700 mm [5' 7"]
BURGER KING CORPORATION

DATE: 12/5/09
 SCALE: N.T.S.
 DWG. NO.: C-12645
 FILE NO.:
 SHEET NO.: 23 REV. NO.: 07